



# Student Success District

---

March 8, 2022



# Land Acknowledgement

**We respectfully acknowledge the University of Arizona is on the land and territories of Indigenous peoples. Today, Arizona is home to 22 federally-recognized tribes, with Tucson being home to the O'odham and the Yaqui. Committed to diversity and inclusion, the University strives to build sustainable relationships with sovereign Native Nations and Indigenous communities through education offerings, partnerships, and community service.**



# Housekeeping

- **To ask questions live** during the webinar, please **submit your question in the chat window or raise your hand** using the hand icon located on the bottom of Zoom page.
- The Chat function allows you to send chat messages to your colleagues in the meeting.
- The webinar Recording, the Q&A feed, the Chat feed, and any presentation materials will be available after the webinar at <https://provost.arizona.edu/content/provost-forum>.

# Panelists

- **Shan Sutton**, Dean, University Libraries
- **Kenya Johnson**, Director, Marketing & Communications, University Libraries
- **Jenny Nirh**, Director, Collaboration Communication and Outreach, Student Success and Retention Innovation
- **Emily Mccarthy**, Senior Director, Student Engagement & Career Development
- **Nina Bates**, Director, Operations and Strategic Initiatives, Office of the Provost
- Q&A



# Student Success District Inception and Vision

---

Shan Sutton, Dean  
University Libraries



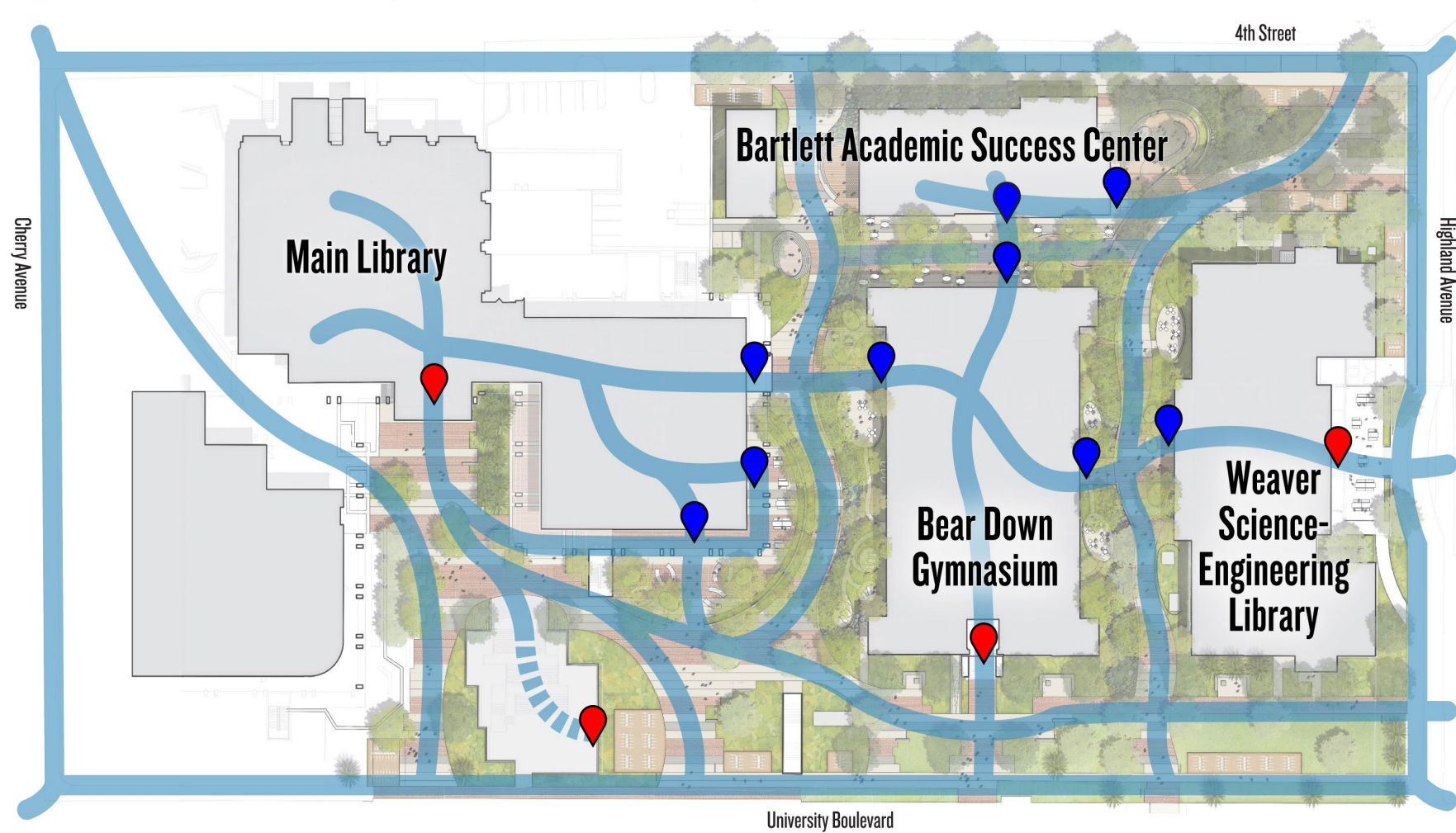
## FOOT TRAFFIC FLOW



Pre-construction entrances



New post-construction entrances



## UA STUDENT SUCCESS DISTRICT

Traffic flow design by Marty Taylor, University of Arizona Libraries; landscape image by Ten Eyck Landscape Architects

TEN EYCK  
LANDSCAPE ARCHITECTS

POSTER  
FROST  
MIRTO

MILLER HULL

SUNDT

THE UNIVERSITY  
OF ARIZONA



# Library Services & Resources

---

Kenya Johnson

Director, Marketing Communications & Events  
University Libraries







**Main Library, 2nd floor (ground floor)**

**200+ study rooms can be reserved for groups or individual studying at Main and Weaver Libraries.**





**Main Library, 2nd floor (ground floor)**

**The CATalyst Studios is open to students from all disciplines, and includes a Maker Studio, a VR Studio, a Data Studio, and learning studios for instruction. Faculty and staff can take free classes and workshops as well.**





**The Data Studio in CATalyst Studios was created for instruction and workshops, but also serves as a meeting space for student groups.**



**Main Library, 2nd floor (ground floor)**

**Students have access to hands-on workshops, programs, drop-in consultations with our librarians and staff, and access to innovative technologies like 3D printers, laser and vinyl cutters, a podcasting studio, and a green screen room.**





**Main Library, 1st floor**

**Students can borrow 1,500 pieces of technology at the Tech Toolshed. The adjacent 24/7 Lounge and Multimedia Zone provide in-person IT help and access to special equipment and software.**





**Albert B. Weaver Science-Engineering Library, 2nd floor (ground floor)**

**Renovations included adding another entrance on the east side of the building and redesigning two floors to focus on connecting library spaces with the collaborative classroom space.**





**Albert B. Weaver Science-Engineering Library, 3rd floor**

**Students now have more study spaces where they can work alone, collaborate in groups, or meet with instructors.**





# Student Success & Retention Innovation

---

Jenny Nirh

Director, Collaboration and Community Outreach  
Student Success & Retention Innovation



# Student Success & Retention Innovation (SSRI)

Student Success & Retention Innovation (SSRI) works to support the success of undergraduate students through individualized academic support, academic skill building, tutoring, peer mentoring, and creating community using strengths-based programming, evidence-based practices, and robust assessment.

ASEM Scholars Program (ASEMS)

Assessment & Research

C.A.T.S. Academics

The SALT center

SSRI Strategy Team

THINK TANK

Thrive Center

Transfer Student Center

[studentsuccess.arizona.edu](https://studentsuccess.arizona.edu)





# Support for Students Within the Student Success District

Student Success & Retention Innovation (SSRI) departments work to provide holistic student support throughout the Bartlett Academic Success Center and the Bear Down Building.

Students, staff and community members are connected to offices and resources by the staff at the SOS and Welcome desks at both BASC and the Bear Down Building.

The SSD has created spaces that welcome students and focus on success resources and has created visible spaces for programs that support and center minoritized student populations.

Allows staff to be more intentional when encouraging students to use resources.



# SSRI Support for Students Within the Student Success District

## Academic Advising

The A Center, College of Humanities Advising  
College of Social & Behavioral Sciences Advising  
College of Science Advising  
*(Not Student Success & Retention Innovation)*

## Academic Support

ASEMS, The SALT Center, THINK TANK, Thrive Center

## Financial Wellness

Thrive Center

## First-Gen Initiatives

Thrive Center

## General Support & Resources

Thrive Center, SOS

## Mentoring

Thrive Center

## Tutoring & Writing Support

The SALT Center, THINK TANK

## Welcome & Belonging Initiatives

SSRI/SOS





# Student Engagement & Career Development (SECD)

---

Emily McCarthy  
Senior Director, Career Development  
Student Engagement & Career Development





# We Take a Competency-Based Approach...

## **NACE Career Readiness Competencies**

- Career & Self-Development
- Leadership
- Communication
- Professionalism
- Critical Thinking
- Teamwork
- Equity & Inclusion
- Technology

# ...and lead students through their Career Journey\*

## Self and Career Exploration

- Self & Career Exploration
- Visit LifeLab

## Prepare & Apply for Jobs

- Resume, CV & Cover Letter
- Online Profiles
- Networking & Relationship Building
- Job Search
- Interviewing

## Build Skills & Gain Experience

- Research Experiences
- Transferable Skill Building
- Functional Skills Building
- Leadership Programs
- Internships and Experiential Learning
- Community Engagement

*\*Updated website with curated self-serve content coming 8/1*

# Curricular Integration Opportunities

## SECD Resources

- Classroom presentations by request
- Curricular development support
- Collaborative course assignments
- Contact Mary Frances Kuper for more information: [mmiller@arizona.edu](mailto:mmiller@arizona.edu)
- Series of 3 capacity-building trainings focused on creating a campus-wide network of career support for students.



## Kaplan Career Core

- Career Development learning platform
- Completion time for each module: 3-4 Hours
- Industry-specific group coaching opportunities
- Contact Emily McCarthy for more information: [mccarthy@arizona.edu](mailto:mccarthy@arizona.edu)

## Grow with Google

- Google & HACU partnership
- Enhance digital literacy and practice using Google tools through career development lessons
- Completion time for each lesson: 45-90 Minutes
- Contact Louise Till for more information: [louisetill@arizona.edu](mailto:louisetill@arizona.edu)





- Work-integrated learning platform connecting faculty, students and staff to organizations and industry partners with projects and other remote, applied learning experiences
- Offered in iCourses across campus
- Offers a 'marketplace' where faculty can integrate existing projects into their courses for credit
- Successfully piloted in 15 unique courses with over 200 students
- Contact Annie Kurtin for more information: [akurtin@arizona.edu](mailto:akurtin@arizona.edu)

The screenshot displays the Riipen platform interface for The University of Arizona. The header features the university's logo and a navigation bar with a search bar, a 'VIEW PUBLIC PROFILE' link, and a 'CREATE COURSE' button. A left sidebar contains a menu with categories like Dashboard, Courses, Internship Programs, MATCHES, SCHOOL PASSES, RECORDS, and ADMIN. The main content area shows a grid of course cards. Each card includes the instructor's name and title, course details, a status indicator (Inactive, Draft, or Finished), and a 'Seeking companies' section. The cards are sorted by 'recently updated'.

Instructor	Course Title	Status	Start Date	End Date	Class Size	Projects	Seeking Companies
Louise Till, Program Manager	FT_PR-2022 Spring Fast Track: Adobe Premiere Rush	Inactive	Starts Feb. 16, 2022	Ends Mar. 16, 2022	25	0   1	Seeking companies near Tucson, United States
Carly Croman, Learning Designer	TBD100 Solve a Real Problem - Undergraduate Insight	Draft	Started Sep. 01, 2020	Ended Dec. 31, 2020	60	0   10	No longer seeking companies
Kathleen Kennedy, Associate Professor of...	RCSC 496A (RCSC 361) Social Media, Influencers and Consumers	Finished	Started Feb. 04, 2021	Ended May. 31, 2021	32	1   2	No longer seeking companies
Kathleen Kennedy, Associate Professor of...	RCSC 400 Retailing and Marketing Strategy	Finished					
Lysette Davi, Director, Honors Online an...	Honors 314 Creating Social Change Through Civic Engagement	Finished					
Kelly Leslie, Associate Professor...	ART 465/565 Graphic Design for Social Impact	Finished					



The Accelerator builds on the vision of *100% Engagement* by directly supporting faculty with incentives, dedicated time, and community to design undergraduate courses that integrate community-based experiential learning, rooted in reciprocity and mutual benefit;

**If selected, fellows receive:**

- Financial incentives for faculty and community partners for course design
- Mentorship and membership in a multidisciplinary community of practice
- Training in human-centered design strategies and how these inform experiential curriculum development
- Access to Accelerator course-specific results from a research study examining potential improvements in students' sense of self-efficacy and civic-mindedness across multiple dimensions of career-readiness and academic competency



# Undergraduate Research and Inquiry

- CURE Training Institute: [stem.arizona.edu/cure-training-institute](http://stem.arizona.edu/cure-training-institute)
- Request a presentation or SECD presence at an event: [career.arizona.edu/faculty-staff/invite-us-your-class-or-event](http://career.arizona.edu/faculty-staff/invite-us-your-class-or-event)
- Faculty Research Database: [ur.arizona.edu/update](http://ur.arizona.edu/update)
- Council on Undergraduate Research Membership - FREE!: [ur.arizona.edu/research/council-undergraduate-research](http://ur.arizona.edu/research/council-undergraduate-research)
- Want to stay informed on opportunities in Undergraduate Research and Inquiry? Email **[UndergradResearch@arizona.edu](mailto:UndergradResearch@arizona.edu)** and ask to be added to the undergraduate research listserv!

# Faculty Funding Opportunities

## Faculty Funding to support Undergraduate Research and Inquiry

The Spring 2022 *Undergraduate Research Partnership Faculty Challenge Grant: Increasing Access to Undergraduate Research* provides awards ranging from \$2500 to \$7500 to pay newly-funded undergraduate student research employees in spring/summer 2022, OR to compensate faculty for time spent preparing new or expanded undergraduate research classes and programs.

Applications will be reviewed on a series of rolling deadlines: March 20 and April 24.

Details and the Spring 2022 application link are available at [ur.arizona.edu/content/faculty-opportunities](https://ur.arizona.edu/content/faculty-opportunities).

## Faculty Grants for Experiential Learning

Faculty who teach undergraduate courses and want to incorporate authentic community-engaged learning are encouraged to submit a grant proposal for up to \$500, limit one proposal per faculty per year.

We are looking for proposals that make clear how these funds will impact the students' experience of their community-engaged learning course. Examples of eligible activities and requests include hard costs for materials, student travel, and wages for undergraduate preceptors.

Applications for AY21-22 will be reviewed and accepted on a rolling basis until funds are spent.

Visit [career.arizona.edu/faculty-grants](https://career.arizona.edu/faculty-grants) for more information and to apply.



# Save the Date!

Our Spring Signature Event celebrating **Community Engagement through Experiential Learning** will be on **Tuesday, April 5 at 4 pm** at the Community Foundation for Southern Arizona.

Join us for an evening of dialogue and collaborative learning between faculty and community organizations.

**[career.arizona.edu/community-engagement](https://career.arizona.edu/community-engagement)**





# Wellbeing and Other Resources

---

Nina Bates

Director, Operations and Strategic Initiatives  
Office of the Provost



# Bartlett Academic Success Center



Four-story building, about 62,000 square foot was completed in December 2020.



# Bear Down Building



The 3rd level, 60,000 square foot Bear Down Building was completed in January 2022.

# Wellbeing and Other Resources in the District

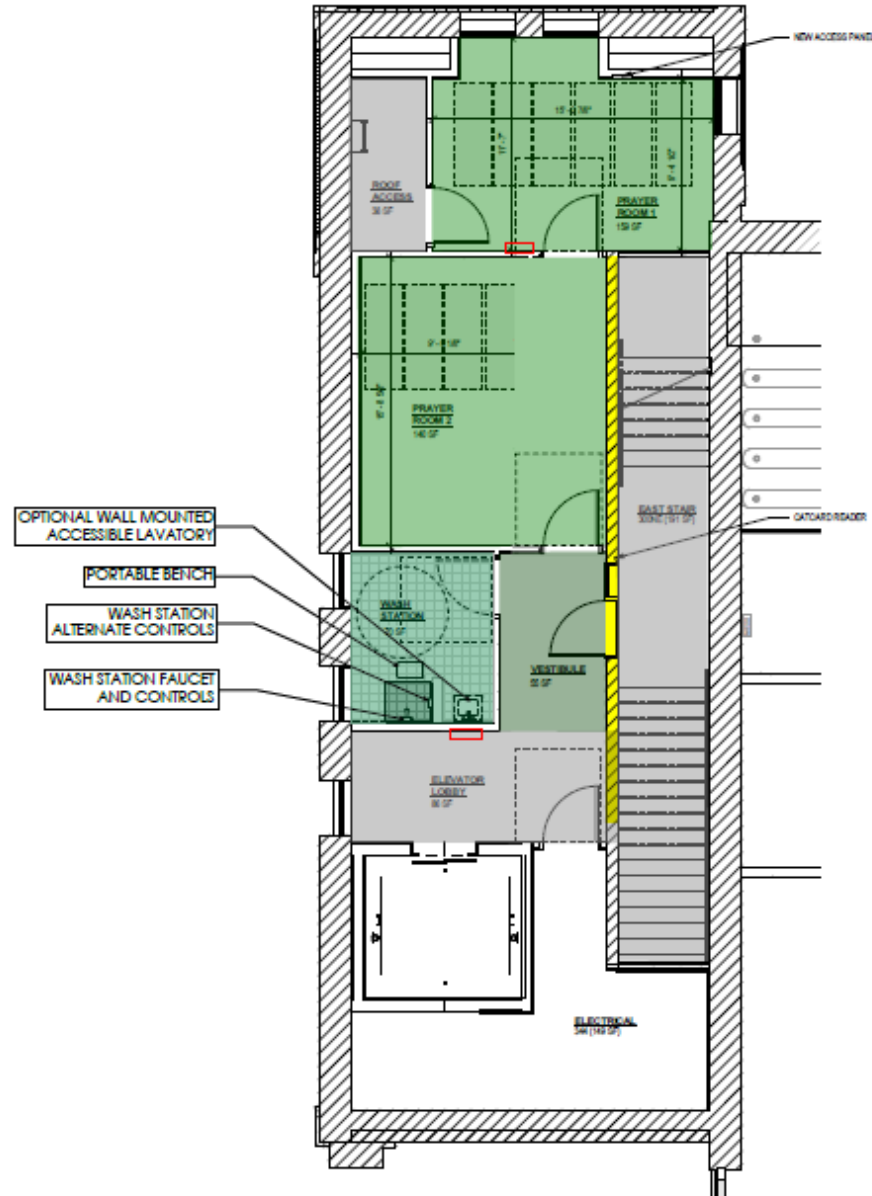
- ADA accessible path throughout the District.
- Campus Recreation's 1,800-square-foot fitness room equipped with the latest cardio equipment and gear and other amenities serve our students, as well as faculty and staff who have memberships.
- [Health Promotion and Prevention Services](#): nutrition coaching, wellness workshops, mental health assistance, etc.
- [Red and Blue Market](#) provides house made favorites and healthier snacks to fuel your studying or workout. Enjoy Smart Tech Vending machines as well.
- [Family Study Room](#) on the 4<sup>th</sup> floor of Weaver Library.
- [Lactation and Family-Friendly Spaces](#).



# Interfaith & Serenity Space

- To support holistic and spiritual wellness, the university has dedicated the institution's first interfaith and serenity spaces. This is also part of the university's efforts to drive the value and practice of diversity and inclusion.
- Collaboration with the Office of Diversity and Inclusion and University Religious Council.
- Dedicated washroom/Wudu station.
- Still under construction and will be completed in July 2022.

# Interfaith & Serenity Space



# Grand Opening Festivities

SAVE THE DATE

APRIL 6<sup>TH</sup>-13<sup>TH</sup>



THE STUDENT SUCCESS DISTRICT  
**GRAND OPENING FESTIVITIES**

- Unit showcase and open house
- Guided tours
- Workshops at the CATalyst Studios
- The Gratitude Project
- Food samples at Red & Blue Market
- Free yoga classes
- Many more!

<https://successdistrict.arizona.edu/grand-opening>

# THANK YOU!

<https://provost.arizona.edu/content/provost-forum>

