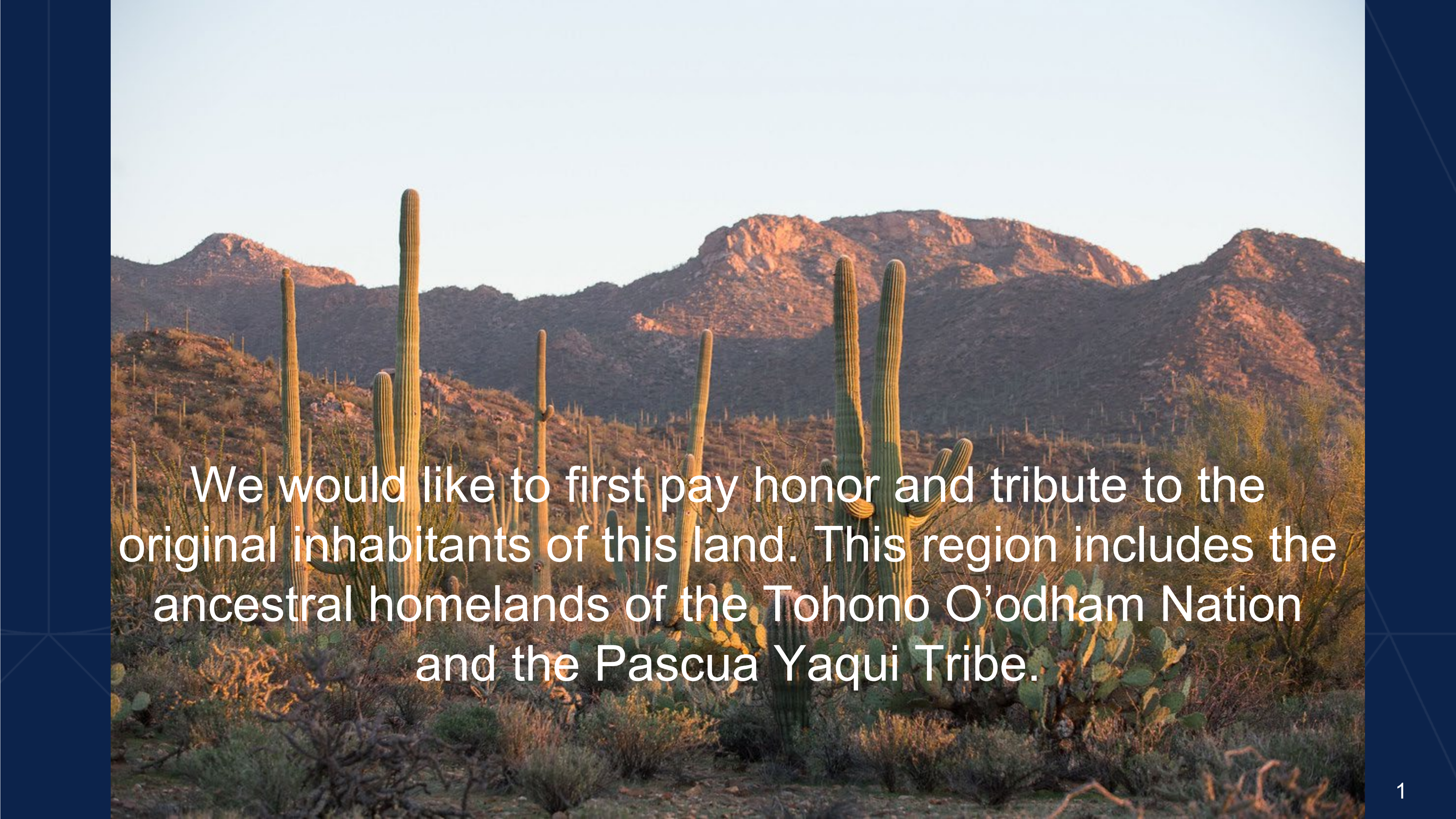


# Managing Forward: Re-opening Campus

---

October 8, 2020



A photograph of a desert landscape at sunset. In the foreground, several tall saguaro cacti stand prominently. The ground is covered with low-lying desert shrubs and dry grass. In the background, a range of mountains is visible, with the peaks and ridges illuminated by the warm, golden light of the setting sun. The sky is a clear, pale blue.

We would like to first pay honor and tribute to the original inhabitants of this land. This region includes the ancestral homelands of the Tohono O'odham Nation and the Pascua Yaqui Tribe.

## LIVE CHAT WITH LIESL

A biweekly chat with Provost Liesl Folks



Housekeeping and Introduction

5 minutes

Provost Folks & Panelists

15 minutes

Questions from live audience & Q&A

40 minutes

# TOPIC: Managing Forward: Re-opening Campus

## Panelist:

- **Christopher Kopach**

Assistant Vice President, Facilities Management, and incoming Incident Commander

# UHAP 7.01.01 Statement on Professional Conduct

As members of the University of Arizona community, we are committed to sustaining an academic community that advances learning and innovation. We recognize our responsibilities and obligations as representatives of the University, and we hold ourselves and each other accountable for the following:

## **We are inclusive and respectful**

We are committed to freedom of expression, academic freedom, and collaborative inquiry. We support creativity and innovation by valuing all voices and engaging in respectful discourse. While we may not always agree with the ideas and opinions of others, we honor their right to express them.

## **We provide a safe environment for those who work, learn, and visit with us**

We do not tolerate discrimination, harassment, or behavior that intimidates, threatens, demeans, or harms another person. We work to resolve differences constructively, look out for each other and promptly address or report issues of concern. We recognize our individual obligations to make the University a safe and inclusive environment by abiding by the University's Workplace Violence policy and Nondiscrimination and Anti-Harassment Policy.



# UHAP 7.01.01 Statement on Professional Conduct

Our primary responsibility to our academic discipline and to our society is to seek and state the truth based on available evidence. Guided by recognition of the value of evidence-based inquiry to our community and an informed citizenry, we recognize our shared obligation to exercise critical judgment and self-discipline in using, extending, and transmitting knowledge. To this end, we devote our energies to developing and improving critical thinking and scholarly rigor through teaching, research, and engagement with the University's broader constituencies.

<https://policy.arizona.edu/faculty-affairs-and-academics/professional-conduct>

# Meeting Arrangement

**This meeting is an official meeting of the University of Arizona. Accordingly;**

- As with any official meeting, courtesy and professionalism are paramount. As we move through our discussion today, we ask that each of you keep the focus on the issue, and not the person. We can disagree, we can debate, but personal attacks do nothing to advance our shared agenda.
- We will engage only in respectful discourse.
- The meeting will be recorded, and the chat feed will form part of the official record of this meeting.
- Anyone who engages in ad hominem attacks, or uses foul language, or limits the voices of others will receive one warning and if the behavior continues will be removed from the meeting.

# Housekeeping

- The webinar is recorded. The recording, the chat and the presentation materials will be available after the webinar on <https://provost.arizona.edu/content/provost-forum>.
- **To ask questions live** during the webinar, please **submit your question** on the Q&A window **and raise your hand** using the hand icon located on the bottom of Zoom page. When called upon, you will be unmuted for others to hear. Please expect a slight lag. Due to Zoom limitations, we are not able to show your video image without losing your access to the Q&A and chat history.
- The Chat function allows you to send chat messages

# Expanded In-Person Instruction Updates

- Current Stage: Stage 2, In-Person classes begin in-person on campus on Monday, October 12. Other Stage 2, Flex In-Person classes will start at a later date when conditions warrant it. This does not include any independent study, research, or practicum courses.
- Only for 30 or fewer students classes that were designated in-person courses at the time of registration.
- An email notification was sent to the instructors on Friday 10/2/2020 regarding this plan.
- Information on how the instructors know that they are part of this group can be found in the “Class Details” <https://registrar.arizona.edu/fall-2020-information-and-updates>

# Expanded In-Person Instruction Updates (cont.)

- To access assigned classroom before starting in-person instruction to review the set-up and the technology, please contact Walter Reis [wries@arizona.edu](mailto:wries@arizona.edu) (520-820-7077), Director of Classroom Services.
- Instructors are encouraged to work with academic unit leaders if they'd like to change their modality.
- Office of Instruction and Assessment  
Mini-Primer: <https://oia.arizona.edu/content/178>  
Teaching Models website: <https://teachingmodels.arizona.edu/>
- Disability Resource Center  
Instructor info: <https://drc.arizona.edu/covid/instructors>

# COVID Updates

- Download Covid Watch Arizona <https://covid19.arizona.edu/covidwatch>
- Sign up for Wildcat Wellcheck <https://wellcheck.arizona.edu/>
- COVID Ambassador Team Hotline: 520-848-4045; 7am-7pm daily
- Campus Webinars <https://provost.arizona.edu/content/campus-webinars>



# Managing Forward: Re-Opening Campus

Christopher M. Kopach, Assistant Vice President  
October 8, 2020



# FM Senior Staff



Renee Hernandez  
Administrative Business  
Manager



Tanya Terranova  
Executive Assistant



Christopher Kopach  
Assistant Vice President



Luis Rocha  
Director, Operations



Monica Encinas  
Admin Assistant



Bruce Overland Director,  
Maintenance Services



Kathia Gin  
Manager, Maintenance Administration



Mark St. Onge  
Director, Utilities



Erik Reinold, Director,  
Business Services



Jenna Elmer  
Director, Human Resources

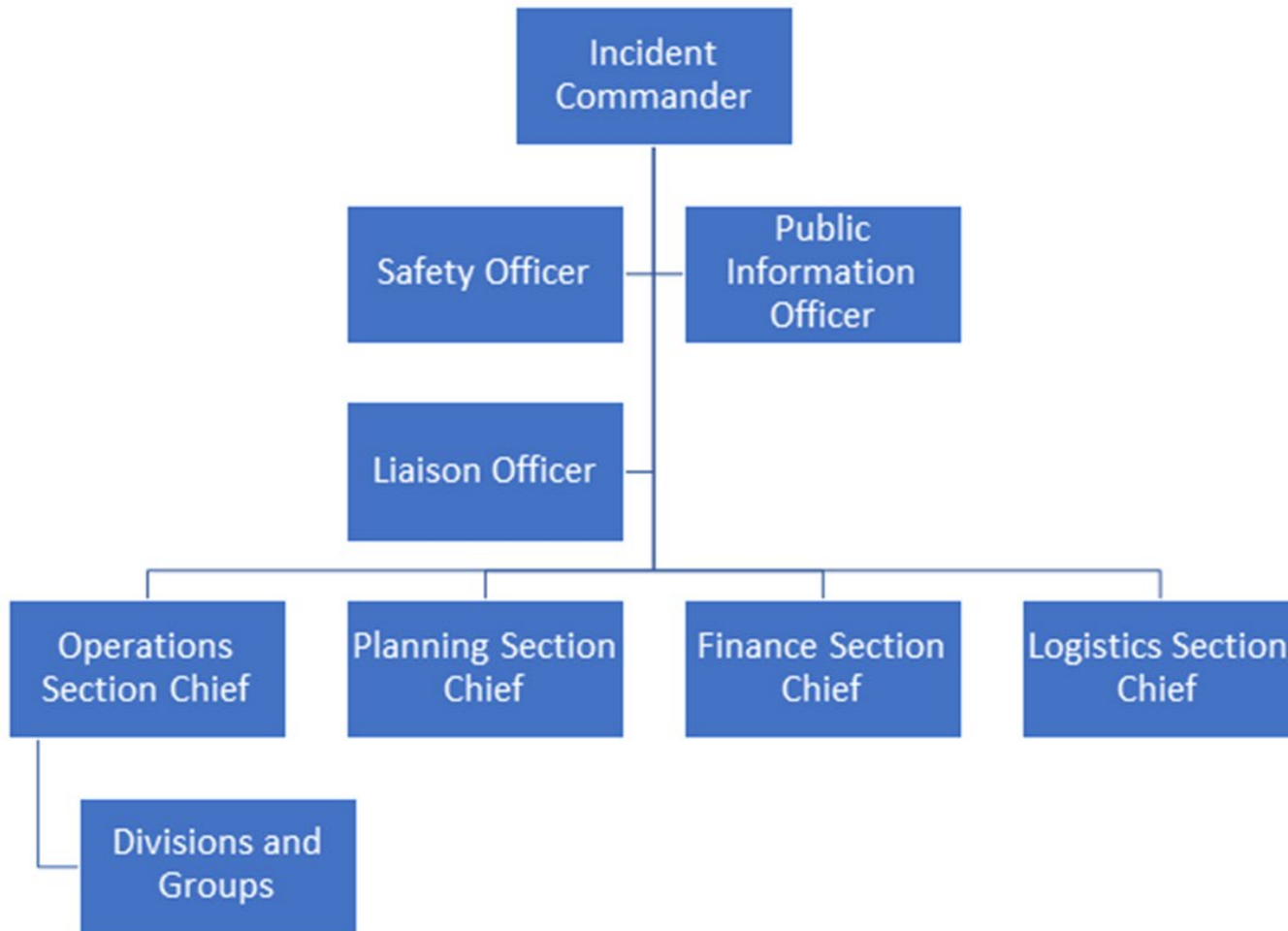


Kevin Williams  
Director, IT

# FM Team



# ICS Org Chart



THE UNIVERSITY OF ARIZONA

[ALVSCE](#) [ALVSCE Directory](#) [Calendar](#) [UArizona Directory](#) [UArizona HR](#)

# COMPASS

## ALVSCE Employee Resources

Search Site 🔍

[FACULTY](#) [STAFF](#) [LEADERS & SUPERVISORS](#) [ALVSCE & UA RESOURCES](#) [MARKETING/COMMUNICATIONS](#) [BUSINESS SERVICES](#)



[Thank You, Facilities](#)

[Explore the New CALS](#)

[Evolutionary Ecologist](#)

[ALVSCE Difference](#)

[uaatwork.arizona.edu](http://uaatwork.arizona.edu) | Master Calendar

## UPCOMING EVENTS

JUL  
16

Campus Reentry Task  
Force Weekly Briefing

JUL  
24

Virtual – COVID-19  
Impacts on Mental Health  
– Part 2: Couples and  
Families

AUG  
01

Virtual – Summer Science  
Saturday

## Keeping the Campus Safe and Healthy



Members of the  
Facilities Management's  
Isolation Cleaning Team  
at the Arizona State  
Museum.



From Left to Right: Custodians Lilliana González, Kyle Graves (temp), and  
Custodial Project Manager, Jose Solis

# What Has FM Done Over the Last 7 Months?

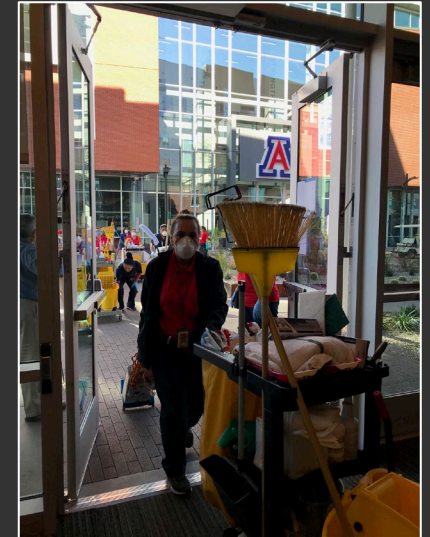


- Ramped up cleaning and disinfecting beginning in January as is custom due to the cold/flu season
  - Using Oxivir which kills the COVID-19 virus
- Following CDC guidelines to ensure the health and safety of our employees and the campus community
- Trained members of our Custodial Staff on strict isolation, including PPE and proper cleaning techniques
- Handling PPE purchasing and storage for several units on campus
- Our Small Engine Shop has been converted to a disinfecting station, filling and replacing thousands of bottles of disinfectant to share across campus
- Reviewing the possibility of hands-free items on campus:
  - Faucets
  - Paper towel dispensers
  - Soap dispensers
  - Door opening devices
- Other items under review:
  - Hand sanitizing stations at entrances to buildings
  - Reviewing classrooms to ensure social distancing practices remain in place for the Fall Semester
  - Plastic shields



# Assisting Residence Life

- 78 Facilities Management employees assisted the Residence Life Department by cleaning out the Arizona Sonora and Honors College Dorms and moving approximately 600 students from all across campus to either the Honors College or Coronado Dorms.



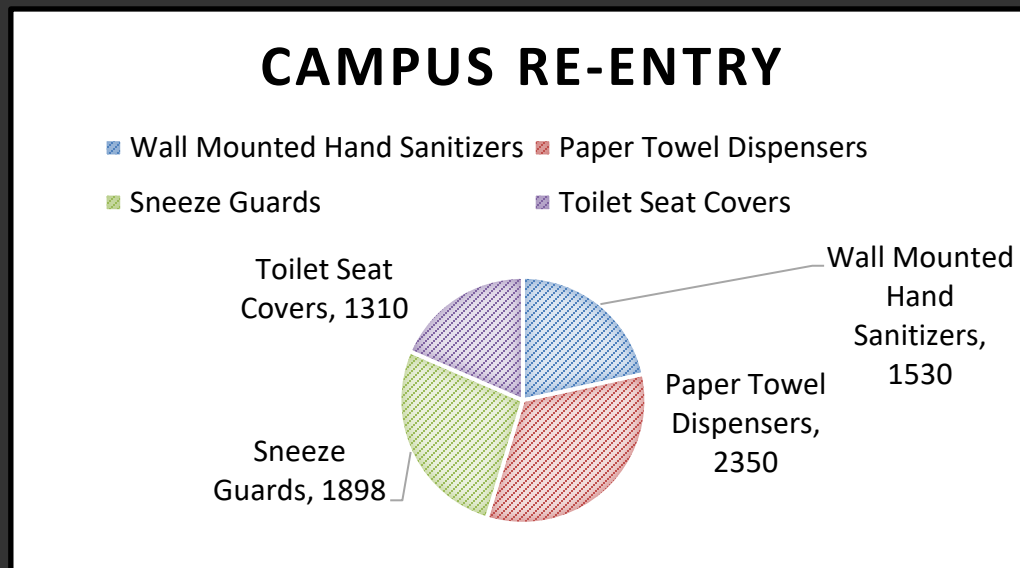
- Facilities Management also assisted with transporting about 1,000 students personal items from 22 dorms on campus to the 34<sup>th</sup> St. Warehouse for safe storage.



Custodial Staff outside of dorms on campus

## Items Completed to Date:

- 1,898 Sneeze Guards Installed
- Signage Completed in 100 Buildings
- 1,530 Wall Mounted Hand Sanitizers Installed
- 2,350 Touch-Free Paper Towel Dispensers Installed
- 1,310 Toilet Seat Covers Installed



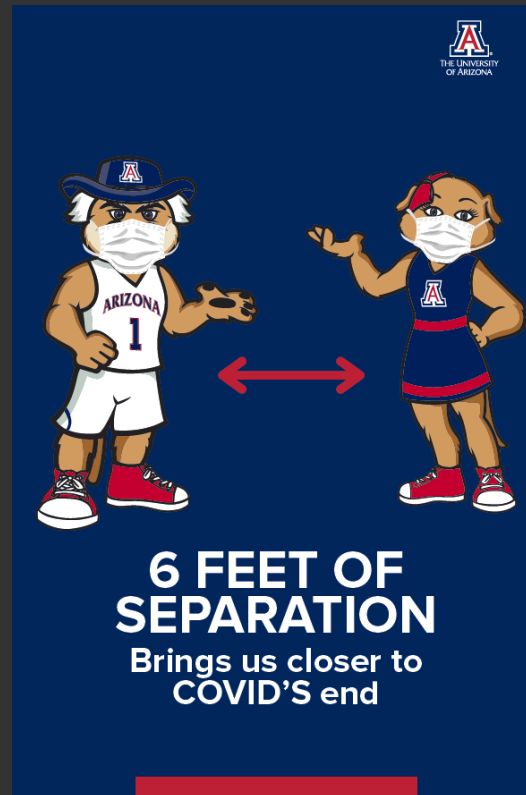
# Plexi-Glass



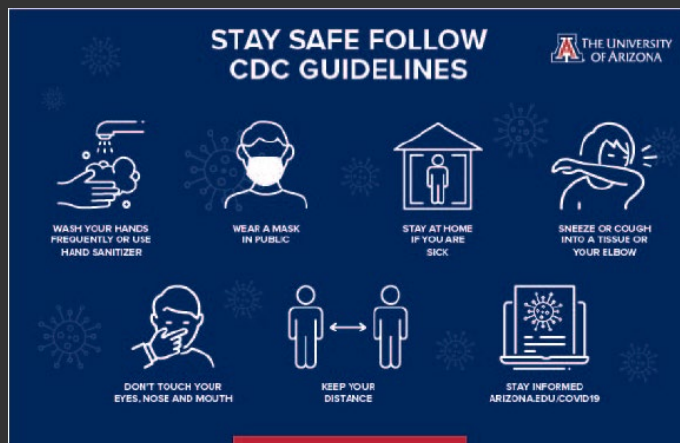
## Specifications:

- This is the standard size: 47" wide x 31" High / 18" wide x 4" high opening.
- The feet are 10" long.
- We can make these smaller as well

# COVID – 19 Signage



# COVID – 19 Signage



# COVID – 19 Signage

**WASH YOUR HANDS  
FOR 20 SECONDS**




**OR, SING THIS IN YOUR  
HEAD WHILE YOU WASH:**

Bear Down, Arizona  
Bear Down, Red and Blue  
Bear Down, Arizona  
Hit 'em hard, let 'em know who's who;  
Bear Down, Arizona  
Bear Down, Red and Blue  
Go, go, Wildcats, go;  
Arizona, Bear Down



**WEARING A MASK**



Will help prevent you from spreading COVID-19 if you are infected or an asymptomatic carrier

Will be beneficial whether it is a personal cloth mask or store-bought

Requires laundering after each use/disposal after you remove it one time to prevent cross-contamination



**SPREAD OUT,  
REDUCE THE  
SPREAD**



**2 PEOPLE MAX  
PER ELEVATOR**



# COVID – 19 Signage



# COVID – 19 Signage



# FM COVID-19 Renovation Signage



Facilities Management



**STOP!**  
**DO NOT ENTER IF**  
**YOU ARE SICK OR**  
**RUNNING A FEVER!**

**PLEASE READ BEFORE ENTERING THIS JOBSITE.**

FOR YOUR PROTECTION AND THE SAFETY OF  
OTHERS, PLEASE OBSERVE THE FOLLOWING  
COVID-19 PREVENTION GUIDELINES AT ALL TIMES.

**SOCIAL DISTANCING IS REQUIRED ON THIS PROJECT**

**MAINTAIN A 6' DISTANCE** from other people whenever possible

**WASH YOUR HANDS** frequently and use hand sanitizer

**MASKS ARE MANDATORY BEYOND THIS POINT**

**AVOID SHARING TOOLS**

**AVOID TOUCHING YOUR FACE** as much as possible

Facilities Management is following the recommended CDC Guidelines for the safety of  
our employees and building occupants. Please visit [www.cdc.gov](http://www.cdc.gov) for more information.

If you suspect someone is ill or notice unsafe behavior,  
please notify Facilities Management immediately.  
CALL 621-3000.

## PPE for Research Labs

*Research labs (including animal care labs) that are in need of PPE to support their “normal” operations should reach out to us at [rlss-help@email.arizona.edu](mailto:rlss-help@email.arizona.edu). If you are in need of respiratory protection such as N95s (not including cloth face coverings, surgical masks or plastic face shields) you must work with RMS or RLSS to select the right respiratory protection for your operation. Individuals must be medically cleared, fit tested and trained by the staff in Occupational Health. These are OSHA regulations, and by law we can’t have employees self-selecting into the respiratory protection program or using N95s and other respirators without going through these steps.*

# PPE Order Form



THE UNIVERSITY OF ARIZONA  
BUSINESS AFFAIRS

Facilities Management

PPE - CAMPUS PREPAREDNESS ORDER FORM

## DEPARTMENT INFORMATION

DEPARTMENT	BUILDING MANAGER	DATE
EMAIL ADDRESS	PHONE NUMBER	BUILDING/ROOM

## COVERALLS AND SHOE COVERS

Item Number	Item Description	Unit of Issue	Average Price	Requested Amount	
1901515	COVERALL, 2X-LRG DISPOSABLE	EA	\$3.94		
1011505	COVERALL, X-LRG DISPOSABLE	EA	\$5.52		
1901530	COVERALL, LARGE DISPOSABLE	EA	\$4.45		
1901545	COVERALL, MEDIUM DISPOSABLE	EA	\$6.11		
1901520	COVERALL, SMALL DISPOSABLE	EA	\$4.79		
1901535	HOODED COVERALL, X-LRG DISPOSABLE	EA	\$4.34		
1901500	HOODED COVERALL, LARGE DISPOSABLE	EA	\$3.20		
1901550	HOODED COVERALL, MEDIUM DISPOSABLE	EA	\$6.11		
1011550	SHOE COVERS, SLIP RESISTANT, WATERPROOF	EA	\$0.21		

## GLOVES

Item Number	Item Description	Unit of Issue	Average Price	Requested Amount	
1900215	X-LARGE DISPOSABLE GLOVES, NITRILE 100/BOX	BOX	\$5.71		
1900315	X-LARGE NITRILE POWDER FREE EXAM GLOVES, BLUE 100/BOX	BOX	\$6.88		
1900210	LARGE DISPOSABLE GLOVES, NITRILE 100/BOX	BOX	\$5.71		
1900205	MEDIUM DISPOSABLE GLOVES, NITRILE 100/BOX	BOX	\$5.00		
1900305	MEDIUM NITRILE POWDER FREE EXAM GLOVES, BLUE 100/BOX	BOX	\$13.96		
1900200	SMALL DISPOSABLE GLOVES, NITRILE 100/BOX	BOX	\$5.00		

## MASKS/SAFETY GLASS


Item Number	Item Description	Unit of Issue	Average Price	Requested Amount	
1905400	SURGICAL MASK, 3PLY DISPOSABLE, (SOLD IN 50/PKG, 20/PKG & 10/PKG)	EA	\$0.70		
1905300	GLASSES, SAFETY, CLEAR, PLASTIC	EA	\$1.03		

## HAND SANITIZERS/WIPES/ALCOHOL

Item Number	Item Description	Unit of Issue	Average Price	Requested Amount	
4106515	PURELL INSTANT HAND SANITIZER	EA	\$2.61		
1906505	BLUMEN HAND SANITIZER, 70% ALCOHOL 17 OZ	EA	\$9.40		
1906515	PALMA INSTANT HAND SANITIZER, 80% ALCOHOL 8 OZ	EA	\$5.40		
1906520	HAND SANITIZER, FOAM 7.5 OZ	EA	\$6.15		
1900015	ALCOHOL PADS, ANTISEPTICS, 200/BOX	BOX	\$5.85		
1900020	ALCOHOL PADS, SWAB 0.500 OZ, 50/BOX	BOX	\$37.51		
1900025	ALCOHOL PADS, LATEX FREE STERILE, 100/BOX	BOX	\$7.06		
1900030	RUBBING ALCOHOL, ANTISEPTIC, BOTTLE 16 OZ	EA	\$1.30		


# FM Webpage as a Resource

THE UNIVERSITY OF ARIZONA®



THE UNIVERSITY OF ARIZONA  
BUSINESS AFFAIRS  
**Facilities Management**

KEYLESS PIN



Service Request:  
(520) 621-  
3000  
Or click here

[Home](#) [FM Services](#) [Contact](#) [News/Articles](#) [Units/Shops](#) [Employee Resources](#) [Apprenticeship Program](#) [Feedback](#) ...

## Coronavirus Information

click here for  
The Official UofA  
Coronavirus Information  
webpage

MASK EFFECTIVENESS

FM RE-ENTRY ZONES

FM CLEANS FOR HEALTH

OXIVIR FIVE 16 (1:16 USE SOLUTION)

OXIVIR TB SDS

CAMPUS REOPENING FAQ

COVID-19 CLEANING PROCESS

COVID SIGNAGE OPTIONS

COVID SIGNAGE OPTIONS - SPANISH

SNEEZE GUARD SPECIFICATIONS

FM PPE ORDER FORM

FM COVID REVIEW

THANK YOU FROM DEPT OF SURGERY

THANK YOU ESSENTIAL SERVICE PROVIDERS

## FM Alerts

OCT-NOV  
14-30

Yavapai Residence Hall Renovations  
0034 -Yavapai Hall

APR-JUL  
16-31

Lane Restrictions & Lane Closures  
Speedway & Park

JUL-SEP  
06-04

Street Closure  
6000 -COMMON AREA - MAIN CAMPUS  
South Campus Drive (East End)

JUL-AUG  
23-17

Renovation Shutdown  
0055 -Library - Main  
2nd Floor Restrooms

AUG  
08-21

Exhaust Fan 5, 6 Shutdown  
0240 -Thomas Keating Bio Research  
4th Floor BSL 3 Lab

AUG  
10-11

Annual Fire Alarm Test  
0070 -Integrated Learning Center

MORE ALERTS

RFQ DESIGN-BUILD SERVICES FOR FM RELOCATION AND CONSOLIDATION FACILITY

# FM Re-Entry Zones

Zone	Building No.	Building Name	Project Manager	SNEEZE GUARDS	SANITIZER DISPENSERS	SIGNAGE	DISINFECTANT	PPE	TOUCHLESS PAPER TOWEL DISPENSERS	TOILET SEAT COVER DISPENSERS	CLASSROOM FURNITURE ADJUSTED	ADDITIONAL
2	77.00	Gould-Simpson	Alanna Kinney	Re-en ▼	Re-en ▼	Re-en ▼	Re-en ▼	Re-en ▼	Re-en ▼	Re-en ▼	Re-en ▼	more signage needed, new PPE requests submitted
2	108.00	McClelland Hall	Alanna Kinney	Re-en ▼	Re-en ▼	Re-en ▼	Re-en ▼	Re-en ▼	Re-en ▼	Re-en ▼	Re-en ▼	Additional sneeze guard
2	119.00	Aerospace And Mechanical Engineering	Alanna Kinney	Re-en ▼	Re-en ▼	Re-en ▼	Re-en ▼	Re-en ▼	Re-en ▼	Re-en ▼	Re-en ▼	
2	168.00	North Rec Center	Alanna Kinney	Re-en ▼	Re-en ▼	Re-en ▼	Re-en ▼	Re-en ▼	Re-en ▼	Re-en ▼	Re-en ▼	
2	174.00	Central Refrigeration Plant	Alanna Kinney	Re-en ▼	Re-en ▼	Re-en ▼	Re-en ▼	Re-en ▼	Re-en ▼	Re-en ▼	Re-en ▼	
2	176.00	College Of Law Building	Alanna Kinney	Re-en ▼	Re-en ▼	Re-en ▼	Re-en ▼	Re-en ▼	Re-en ▼	Re-en ▼	Re-en ▼	More signage requested
2	177.00	Rountree Hall	Alanna Kinney	Re-en ▼	Re-en ▼	Re-en ▼	Re-en ▼	Re-en ▼	Re-en ▼	Re-en ▼	Re-en ▼	
2	197.00	Visual Arts Graduate Research Laboratory	Alanna Kinney	Re-en ▼	Re-en ▼	Re-en ▼	Re-en ▼	Re-en ▼	Re-en ▼	Re-en ▼	Re-en ▼	
2	199.00	Douglass House	Alanna Kinney	Re-en ▼	Re-en ▼	Re-en ▼	Re-en ▼	Re-en ▼	Re-en ▼	Re-en ▼	Re-en ▼	
2	199.01	Smith House	Alanna Kinney	Re-en ▼	Re-en ▼	Re-en ▼	Re-en ▼	Re-en ▼	Re-en ▼	Re-en ▼	Re-en ▼	
2	302.00	Center For Creative Inquiry	Alanna Kinney	Re-en ▼	Re-en ▼	Re-en ▼	Re-en ▼	Re-en ▼	Re-en ▼	Re-en ▼	Re-en ▼	
2	413.00	Middle East Studies Association	Alanna Kinney	Re-en ▼	Re-en ▼	Re-en ▼	Re-en ▼	Re-en ▼	Re-en ▼	Re-en ▼	Re-en ▼	
2	416.00	Vine Avenue Annex	Alanna Kinney	Re-en ▼	Re-en ▼	Re-en ▼	Re-en ▼	Re-en ▼	Re-en ▼	Re-en ▼	Re-en ▼	
2	418.00	Flandrau Science Center Annex	Alanna Kinney	Re-en ▼	Re-en ▼	Re-en ▼	Re-en ▼	Re-en ▼	Re-en ▼	Re-en ▼	Re-en ▼	

Q&A

